



GRUBB PROPERTIES
People who care. Places that matter.

117 Edinburgh South

MACGREGOR PARK | CARY, NC 27511

OFFICE SPACE FOR LEASE



- **\$21.50 Full Service**
- **26,057 SF Building**
- **2-Story brick & glass construction**
- **Private balconies & patios; walking trails & recreational areas**
- **Conveniently located to the intersection of US 1 and Hwy. 64**
- **On site professional property management & 24-hour emergency maintenance**
- **Under new management w/numerous capital improvements**
- **Within walking distance of:**
 - Homewood Suites
 - Two daycare facilities
 - Banking Services
 - 15,000 SF health club
 - MacGregor Village shopping center
 - Several fine restaurants & delis
 - Courtyard by Marriott

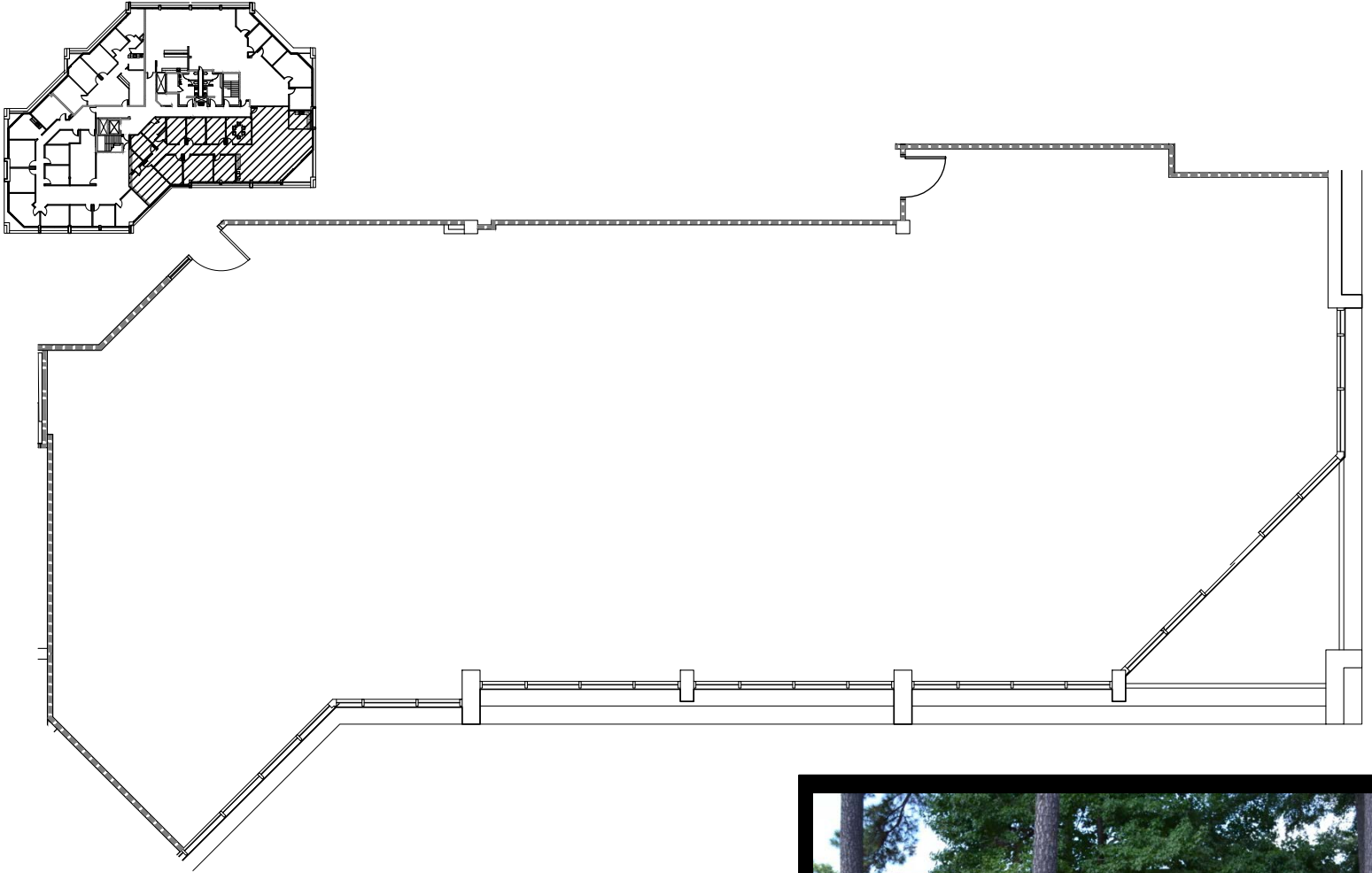


GRUBB PROPERTIES
People who care. Places that matter.

117 Edinburgh South

MACGREGOR PARK | CARY, NC 27511

OFFICE SPACE FOR LEASE



SUITE 280
3,885 SF





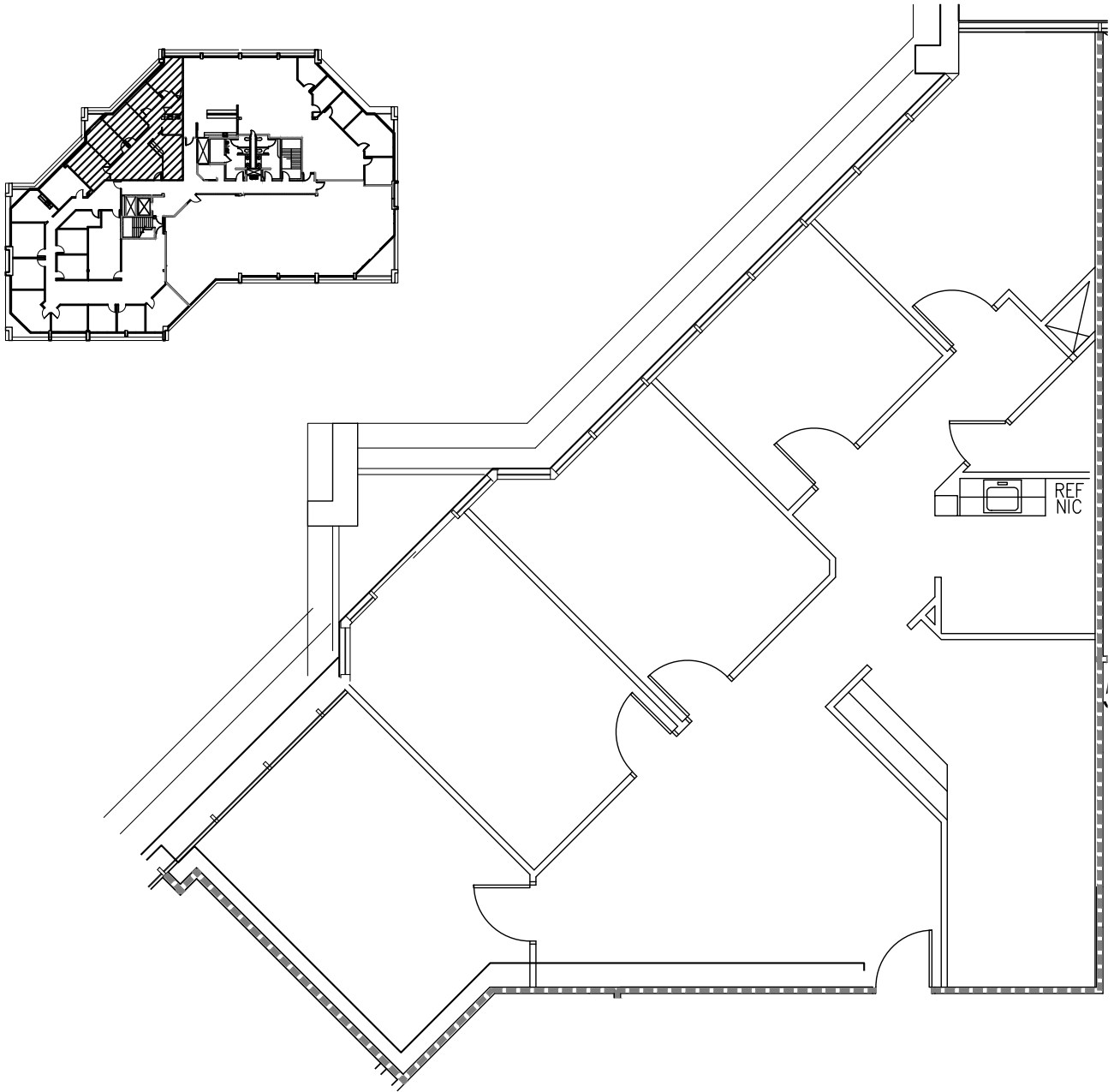
GRUBB PROPERTIES

People who care. Places that matter.

117 Edinburgh South

MACGREGOR PARK | CARY, NC 27511

OFFICE SPACE FOR LEASE



SUITE 203

1,822 SF